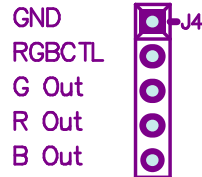


VBXE2 connectors pinouts, please refer to the schematics and installation guide for their end-points

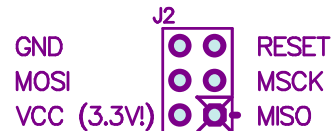
RGB output for RGB monitor/SCART equipped TV

The RGBCTL should be connected to the pin #16 of the SCART connector

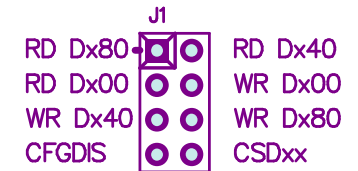
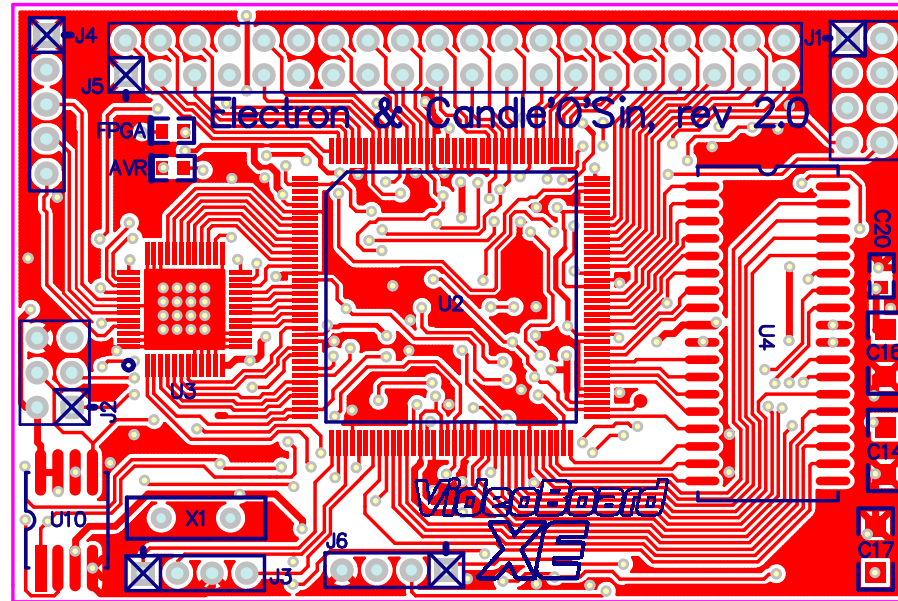


CSync signal should be taken from the pin #15 of the CD4050 chip this Chip is located near GTIA on the motherboard

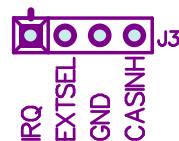
Please refer to the motherboard pictures of Your Atari



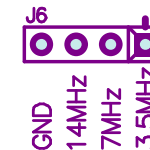
Standard AVR 6-pin programming header  
Service Use ONLY!



Please see the schematics section for further explanation of this connector



Connect these signals to the appropriate points on Your motherboard



For XE series only GND and 14MHz should be connected

For XL series GND and 3.5MHz 7MHz is provided for the future use (ie Bob Wooley's turbo board)